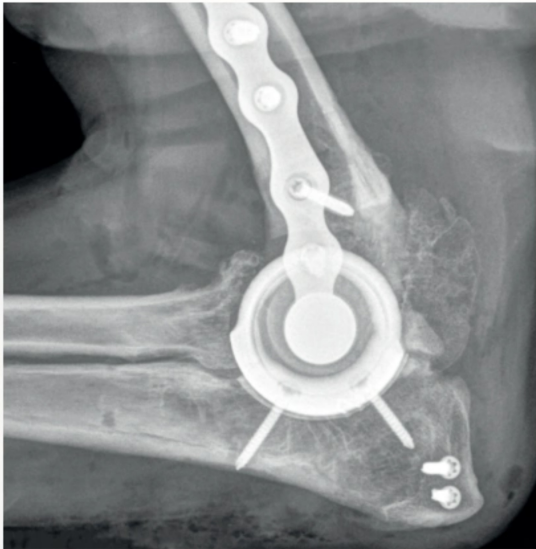


Did you know there are options to alleviate pain and limping?

Joint Replacement isn't just for human patients! Options like the KYON Total Medial Elbow Replacement System can give pets comfort and mobility back!



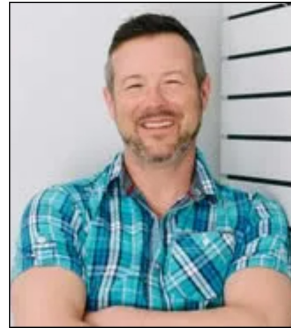
Your vet may recommend Elbow Replacement surgery to alleviate the pain and/or disability associated with end-stage elbow disease.

Other procedures and approaches exist for dogs with early stages of elbow disease. However, they are not able to eliminate the pain of osteoarthritis consistently for the long term.



VETERINARY  
HOSPITAL

29 Elizabeth St, Caledon Village  
ON L7K 0W7, Canada  
519-927-5775  
caledonvet.com  
cmvhtechnicians@gmail.com



**Dr. John Brajkovich**  
BSc, DVM, MANZCVS

KYON Total Medial Elbow  
Replacement Specialist

At Caledon Mountain Veterinary Hospital, Dr. John Brajkovich brings advanced orthopedic care to companion animals through his specialized training in the KYON Total Medial Elbow Replacement (TME) procedure. As one of the few veterinarians in the world certified to perform this innovative surgery, Dr. Brajkovich offers hope for dogs suffering from severe medial compartment elbow disease.

With a strong record of successful outcomes, the TME procedure has helped many patients regain mobility and enjoy a better quality of life. Dr. Brajkovich and his dedicated team are committed to providing personalized care and comprehensive surgical support, from diagnosis through recovery.

Veterinarians and pet owners are encouraged to contact Caledon Mountain Veterinary Hospital to learn more about the Total Medial Elbow Replacement procedure and to determine if it's the right solution for their patients or pets. Let us help your patients take their first steps toward pain-free movement.

KYON | Total  
A Movora Brand | Medial  
Elbow



VETERINARY  
HOSPITAL

Revolutionizing Canine Joint Care

There's hope for dogs who walk in pain!

Learn about the cutting-edge KYON Total Medial Elbow Replacement System that can alleviate lameness due to end-stage canine elbow disease.

## Clinical Signs of Elbow Dysplasia

### Early Stages

- Slight limp after running or other exercise

### Advancing Elbow Disease

- Awkward turning of paws or holding elbows in or out
- Reduced activity
- Longer and/or more frequent periods of rest
- Behavior that looks like easing the weight off their front paws or elbows (including resistance to use stairs)

### End Stage

- Resistance to activity, even a short stroll, as pet's reluctance to stand and walk becomes evident
- Visible discomfort
- Expression of pain when examined by vet
- Restricted range of motion

Your veterinarian may see even more signs: examination through arthroscopy would show scars of diminished cartilage and the internal damage to the joint.

## What Options Can Help?

### Early Stages

- Weight optimization to avoid excess load on the joint
- Non-Steroidal Anti-Inflammatory Drugs (NSAIDs) as prescribed by your vet
- Nutritional Supplements may support joint health
- Intra-Articular Injections precisely targeted for localized pain relief
- Physical therapy regimen for strength, flexibility, and overall joint functionality.

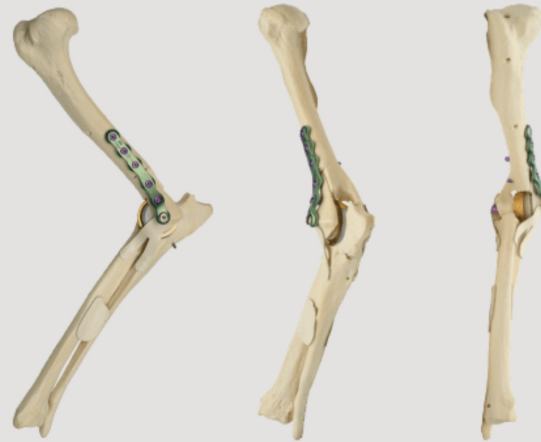
### End Stage

- Elbow replacement surgery to restore joint function
- Joint fusion surgery to immobilize painful joint
- Limb amputation to remove source of pain

## How Does the KYON Total Medial Elbow Replacement System Work?

### Replacing the Diseased Joint

The system is designed to replace only the medial compartment of the elbow joint. The undamaged lateral side of the elbow is preserved – resulting in a balance between restoration and conservation.



### Enhanced Bone Integration

Textured surface structure promotes bone ongrowth for fusion with the existing bone structure.

### Accelerated Implant Integration

The bone contact surfaces of the implants feature Hydroxyapatite (HA) coatings designed for swifter bone ongrowth that leads to stable attachment.

### Exceptional Wear Performance

Using Vitamin E-infused polyethylene with a highly polished Titanium Nitride (TiN) coated surface is a combination designed for smooth, long lasting performance.

## Know the Risks

Any surgery involves risk, and you should discuss these considerations with your veterinarian.



### Anesthetic and Infection Risks

- While rare, **complications from anesthesia** exist as a potential risk. Careful monitoring and experienced professionals mitigate these concerns.
- Surgical Site **Infections**, though infrequent, remain a consideration. Vigilant hygiene practices and meticulous postoperative care contribute to safeguarding against this risk.



### Additional Risks and Considerations

- Potential of ulna or humerus (foreleg bones) **fracture**. While rare, it's important to consider the surgical team's expertise and the pet's ability to follow postoperative instructions.
- For dogs carrying **excess weight**, proactive weight reduction prior to surgery contributes to surgical outcomes and supports postoperative recovery.
- **Pressing health matters**, such as cancer or other significant medical issues, call for prioritized treatment. Elbow replacement is most effective when not overshadowed by other concerns.
- Lameness from **sources other than elbow pain**, such as neck, shoulder, carpus, or metacarpals, will not be addressed by elbow replacement; your veterinarian will recommend treatment that fits your pet.